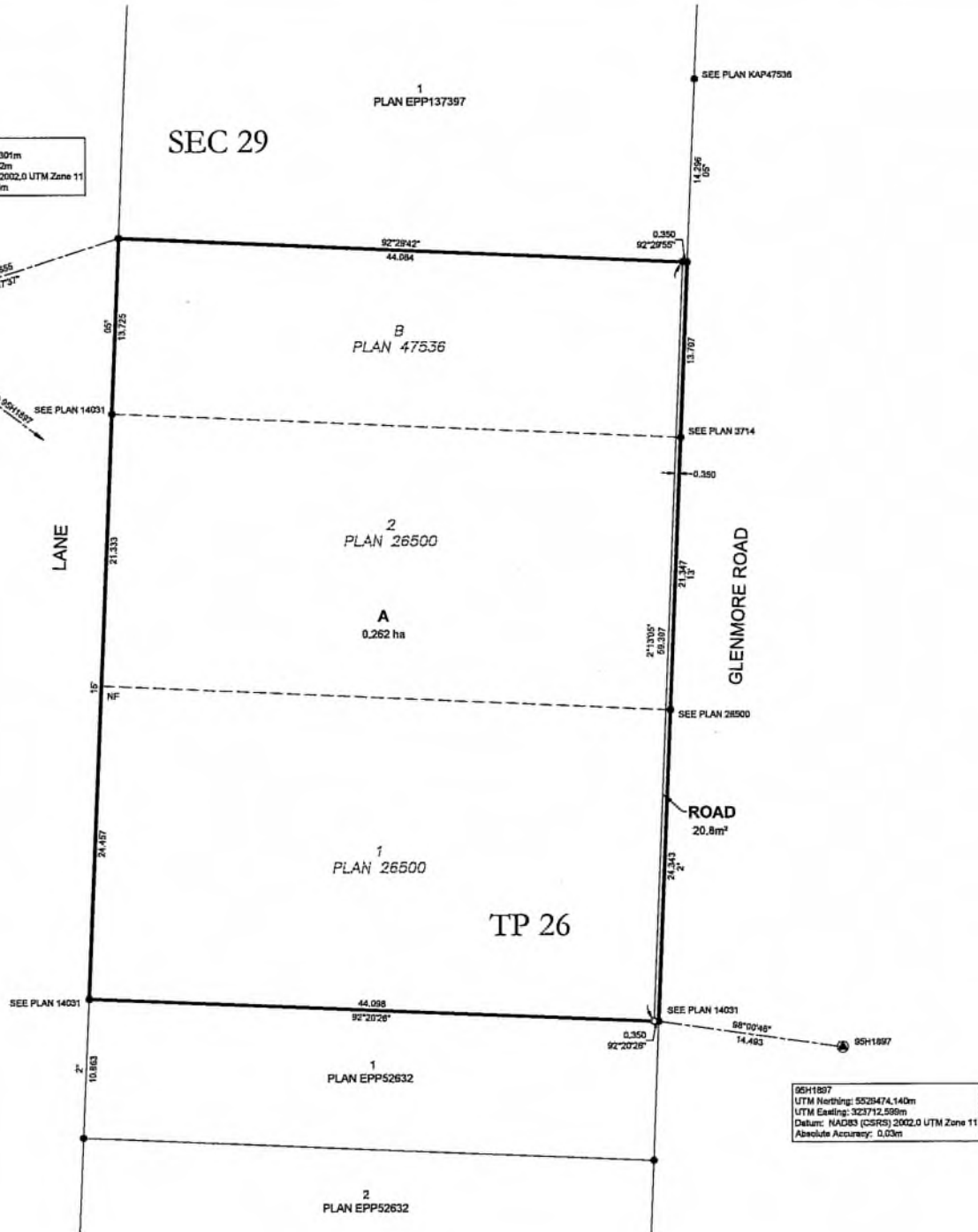




75H2871
 UTM Northing: 5329401.307m
 UTM Easting: 323229.762m
 Datum: NAD83 (CSRS) 2002.0 UTM Zone 11
 Absolute Accuracy: 0.03m



**SUBDIVISION PLAN OF: LOT B
 PLAN KAP47536; LOT 1 AND LOT 2
 PLAN 26500; ALL IN SECTION 29
 TOWNSHIP 26 OSOYOOS DIVISION
 YALE DISTRICT**

BCGS 82E.083

SCALE 1:250



The intended plot size of this plan is 560mm in width by 432mm in height (C size) when plotted at a scale of 1:250.

LEGEND

- Found Standard Iron Post
- Placed Standard Iron Post
- ⊗ Found Control Monument

Integrated Survey Area No. 4, City of Kelowna NAD83 (CSRS) 2002.0

Grid bearings are derived from GNSS observations and are referred to the central meridian of UTM Zone 11 (117° West Longitude).

The UTM coordinates and estimated absolute accuracy achieved are derived from dual frequency GNSS observations to CANNET Active Control Station BC_Kelowna.

The coordinates and absolute accuracies shown on this plan are a result of an independent and accurate GNSS survey and do not represent official published coordinates.

This plan shows horizontal ground-level distances, unless otherwise specified. To compute grid distances, multiply ground-level distance by the average combined factor of 0.999925. The average combined factor has been determined based on an ellipsoidal elevation of 354 metres.

This plan lies within the Regional District of Central Okanagan.

This plan lies within the jurisdiction of the Approving Officer for the City of Kelowna.

The field survey represented by this plan was completed on the 20th day of November, 2024.

Alexander Christian Dzielski, BCLS 1035

95H1887
 UTM Northing: 5328474.140m
 UTM Easting: 323712.566m
 Datum: NAD83 (CSRS) 2002.0 UTM Zone 11
 Absolute Accuracy: 0.03m

VECTOR
 GEOMATICS LAND SURVEYING LTD.
 111-810 Clement Ave
 Kelowna, B.C. V1Y 0J7
 Ph: (250) 866-0172
 www.vectorgeomatix.com
 FILE No.: 240214580 Date: 2024-11-29 Drafted by: CM
 DRAWING No.: 2402145 EPP142448 SUB R0